

DAILY RESEARCH, 28 JULI 2020

PT PROFINDO SEKURITAS INDONESIA

**GD PERMATA KUNINGAN LT 19
JL KUNINGAN MULIA KAV 9C GUNTUR SETIABUDI JAKARTA SELATAN 12980**

TELP +62 21 8378 0888

EMAIL : CUSTOMERSERVICE@PROFINDO.COM

WWW.PROFINDO.COM | PROCLICK.PROFINDO.COM

MARKET MOVERS



Bursa saham AS ditutup kompak menguat dimana investor menanti rilis laporan keuangan dan juga rencana The Fed menggelontorkan stimulus baru untuk pemulihan ekonomi dari covid 19. **DOW +0.43%, S&P +0.74%, NASDAQ +1.67%**

Bursa saham Eropa ditutup melemah akibat kekhawatiran penyebaran covid 19 jilid 2 di Kawasan Eropa. **Indeks DAX +0.02%, FTSE -0.31%, CAC -0.34%**

Bursa Saham Asia dibuka mayoritas menguat dimana investor menantikan Stimulus Pemerintah AS untuk pemulihan Ekonomi. **Hang Seng -0.41%, KOSPI +1.93%, Nikkei +0.46%**

Harga minyak mentah dunia menguat seiring dengan rencana The Fed mengeluarkan kebijakan stimulus baru untuk pemulihan ekonomi. Harga emas ditutup menguat setelah meningkatnya tensi ketegangan AS China membuat kekhawatiran akan perlambatan ekonomi Global membuat emas menjadi buruan investor untuk mengamankan nilai Aset mereka. **WTI +0.75%, Brent Oil +0.61%, Gold +1.95%.**

IHSG pada perdagangan hari ini diperkirakan akan **BULLISH** dengan Range pergerakan **5072-5162** dengan saham-saham yang dapat diperhatikan : **ANTM BJTM AKRA INCO SMRA ERAA**

MARET DATA

AMERIKA

DOW 30	26,584.77	+114.88	+0.43%
S&P 500	3,239.41	+23.78	+0.74%
NASDAQ	10,536.27	+173.09	+1.67%

EUROPE

DAX	12,838.66	+0.60	+0.02%
FTSE 100	6,104.88	-18.94	-0.31%
CAC 40	4,939.62	-16.81	-0.34%

ASIA

SHANGHAI	3,205.16	-0.07	0.26%
HANGSENG	24,603.26	-102.07	-0.41%
SET	1,340.92	0.00	0.00%
KOSPI	2,260.60	+42.74	+1.93%
JCI	5,116.67	+33.67	+0.66%
NIKKEI	22,820.50	+104.65	+0.46%
ASX	6,106.40	+62.20	+1.03%

COMMODITIES

GOLD	1,968.75	+37.75	+1.95%
WTI OIL	41.91	+0.31	+0.75%
BRENT OIL	44.28	+0.27	+0.61%
COAL	62.10	-0.55	-0.88%
PALM OIL	2790	-102	-3.53%
TINS	18,175.00	+172.50	+0.96%
NICKEL	13,962.50	+170.00	+1.23%

EVENT & ECONOMIC CALENDER

ECONOMIC CALENDER :

INDONESIA

270720 MOTORBIKE SALES YoY (JUN)
LOAN GROWTH YoY (JUN)

GLOBAL

270720 HONG KONG TRADE BALANCE (JUN)
CHINA INDUSTRIAL PROFIT YoY (JUN)
JAPAN ALL INDUSTRY ACTIVITY INDEX MoM (MAY)

290720 US API CRUDE OIL STOCK CHANGE
KOREA CONSUMER CONFIDENCE (JUL)
AUSTRALIA INFLATION RATE YoY (Q2)
GERMANY IMPORT PRICE MoM (JUN)
FRANCE CONSUMER CONFIDENCE (JUL)
HONG KONG GDP RATE YoY (Q2)

300720 FED INTEREST RATE DECISION
JAPAN RETAIL SALES YoY (JUN)
FRANCE PPI MoM (JUN)
GERMANY GROWTH GDP RATE YoY (Q2)
HONG KONG RETAIL SALES YoY (JUN)
EUROPE CONSUMER CONFIDENCE FINAL (JUL)
GERMANY INFLATION RATE YoY (JUL)
US GDP GROWTH RATE QoQ (Q2)
US JOBLESS CLAIMS

310720 KOREA RETAIL SALES YoY (JUN)
JAPAN INDUSTRIAL PRODUCTION YoY (JUN)
CHINA NBS PMI MANUFACTURING (JUL)
FRANCE GDP GROWTH RATE QoQ (Q2)
GERMANY RETAIL SALES MoM (JUN)
FRANCE INFLATION RATE YoY (JUL)
EUROPE GDP GROWTH RATE QoQ (Q2)
EUROPE INFLATION RATE YoY (Q2)

CORPORATE ACTION :

DEVIDEN

270720 GHON RP 20 (CUM 2707, PAYMENT 1908)
280720 AMAG RP 30 (CUM 2807, PAYMENT 0608)
290720 FISH RP 75 (CUM 2907, PAYMENT 1908)
300720 SHIP RP 16 (CUM 3007, PAYMENT 1908)

RUPS

270720 WIIM PNBS PLAS PGLI MGRO MASA MAGP IATA BCAP
280720 WEGE TRUK SRSN MSKY IPTV INTP DOID
290720 ZONE UNIC UCID TAMU MERK MDKA KRAS KEEN KAEF INCO INAF FORU
CTBN CSRA ATIC
300720 YELO TPMA SLIS PALM IFII DYAN CTRA CLEO CITA BBYB BBKA ASRM

IPO

RIGHT ISSUE

JAKARTA COMPOSITE INDEX



PREVIOUS 27 JULI 2020

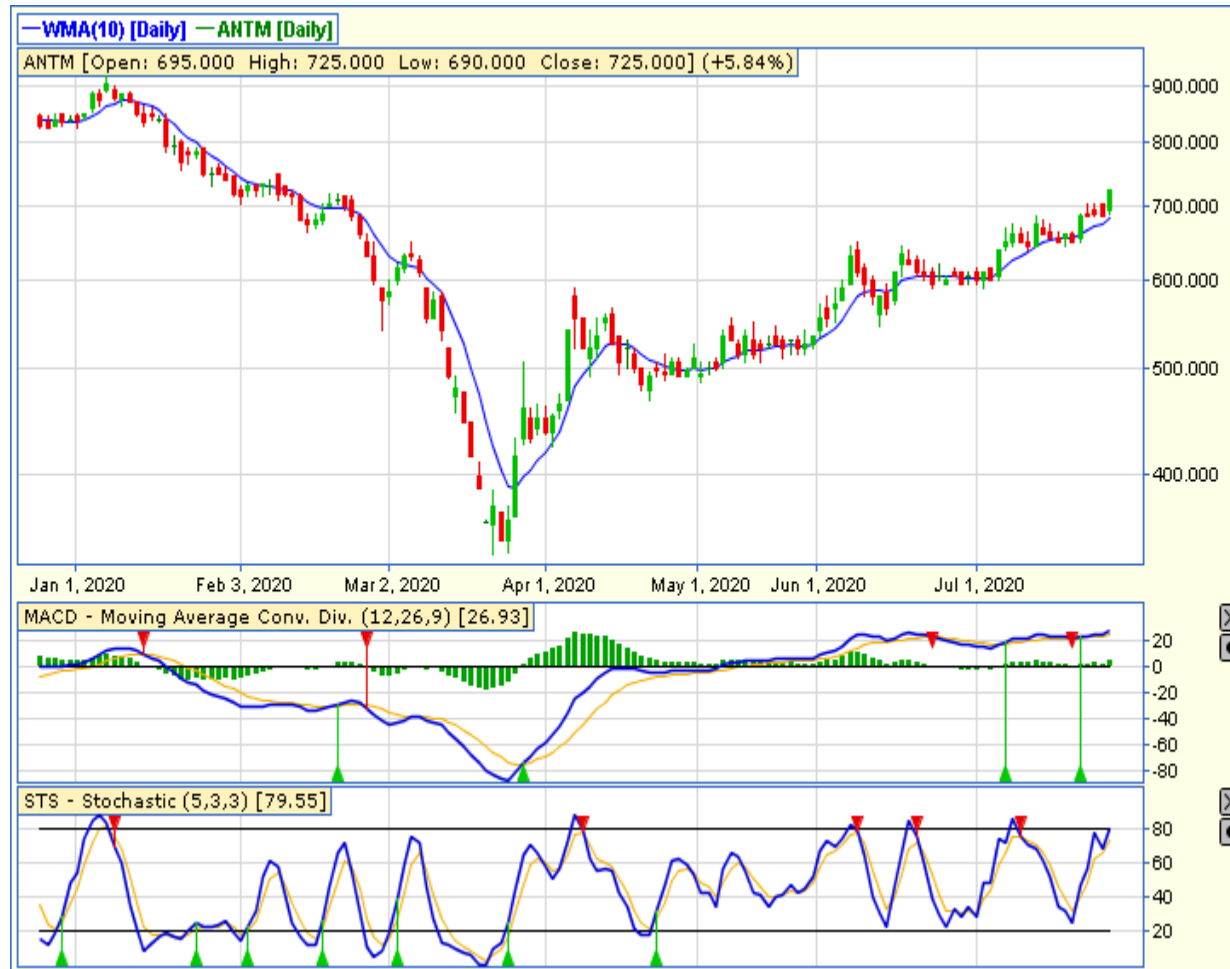
CLOSING	5116.666	+0.663%
TRANSACTION	IDR 7.31 TRILLION	
FOREIGN NETT	IDR 440 BIO (SELL)	

PREDICTION 28 JULI 2020

BULLISH
RANGE 5072-5162

BULLISH HARAMI
STOCHASTIC : NETRAL
MACD : HISTOGRAM NEGATIF DAN NETRAK

TECHNICAL RECOMENDATION



ANTM – PT ANEKA TAMBANG TBK

CLOSING 27/7/2020 RP 725 (+5.84%)

**SELL ON STRENGTH
TAKE PROFIT 750**

**BREAK OUT RISING WEDGE
STOCHASTIC : UPTREND
MACD : HISTOGRAM POSITIF DAN UPTREND**

TECHNICAL RECOMENDATION



BJTM – PT BPD JAWA TIMUR TBK

CLOSING 27/7/2020 RP 575 (+8.5%)

**SELL ON STRENGTH
TAKE PROFIT 635**

**BREAK OUT TRIANGLE
STOCHASTIC : UPTREND
MACD : HISTOGRAM POSITIF DAN GOLDEN CROSS**

TECHNICAL RECOMENDATION



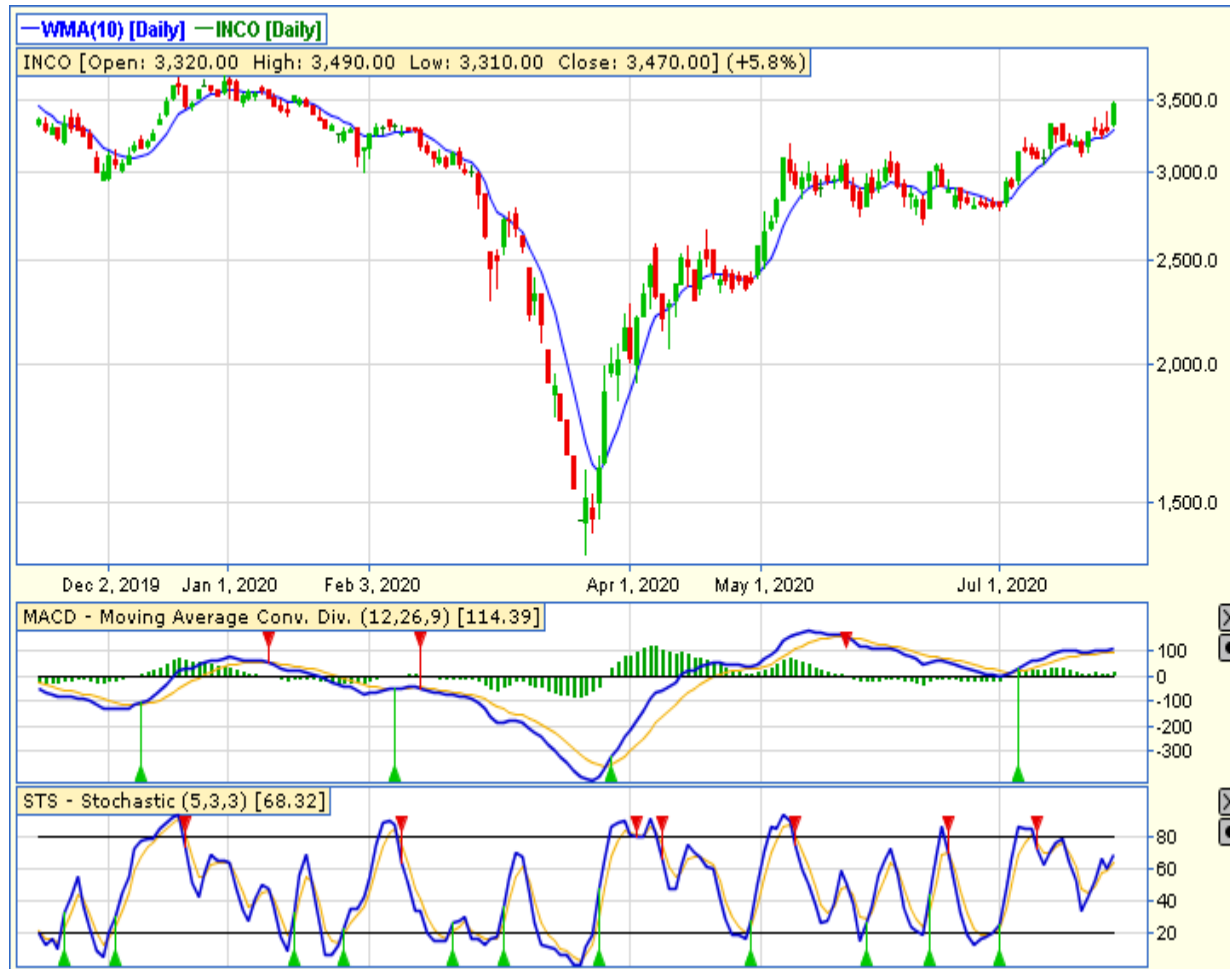
AKRA – PT AKR CORPORINDO TBK

CLOSING 27/7/2020 RP 2850 (+8%)

**SELL ON STRENGTH
TAKE PROFIT 3010**

**BREAK OUT TRIANGLE
STOCHASTIC : UPTREND
MACD : HISTOGRAM POSITIF DAN UPTREND**

TECHNICAL RECOMENDATION



INCO – PT VALE INDONESIA TBK

CLOSING 27/7/2020 Rp 3470 (+5.8%)

**SELL ON STRENGTH
TAKE PROFIT 3670**

**BREAK OUT RISING WEDGE
STOCHASTIC : UPTREND
MACD : HISTOGRAM POSITIF DAN UPTREND**

TECHNICAL RECOMENDATION



SMRA – PT SUMMARECON AGUNG TBK

CLOSING 27/7/2020 RP 620 (+5.1%)

BUY

TARGET PRICE 730

STOPLOSS < 600

BREAK OUT TRIANGLE

STOCHASTIC : UPTREND

MACD : HISTOGRAM NEGATIF MENGECIL DAN
BERSIAP GOLDEN CROSS

TECHNICAL RECOMENDATION



ERAA – PT ERAJAYA SWASEMBADA TBK

CLOSING 27/7/2020 RP 1495 (+2.4%)

BUY

TARGET PRICE 1570

STOPLOSS < 1460

BULLISH ABANDONED BABY

STOCHASTIC : OVERSOLD

MACD : HISTOGRAM POSITIF DAN UPTREND

RESEARCH TEAM



YULIANA

**RESEARCH ANALYST &
CORPORATE FINANCE**



DIMAS WP PRATAMA, CSA

TECHNICAL ANALYST

EQUITY CAPITAL MARKET TEAM



JESSIE JAMES

HEAD OF EQUITY SALES



PRASETYO NUGROHO

HEAD OF DEALING ROOM



GABRIELLA PRATIWY

HEAD OF ONLINE TRADING